

**ADDENDUM #1**

TITLE: Belle Glade Airport Lift Station Construction
FDOT Joint Participation Agreement #442007-
1-94-01

DATE: 2/24/2021

BID NO: 02-2021

BID OPENING DATE: 3/16/2021 @
3:00PM

NUMBER OF PAGES: 12

This Addendum to the drawings, specifications and contract documents is issued to provide additional information and clarification to the original bid specifications and ITB form and is hereby declared a part of the original drawings, specifications and contract documents. In case of conflict, this Addendum shall govern.

Bidders shall acknowledge receipt of this Addendum by inserting this Addendum in the attachment section of the Bid Form.

CONTENTS

1. PRE-BID CONFERENCE MEETING MINUTES.
2. PRE-BID CONFERENCE SIGN IN SHEET.
3. ADDITION TO THE SPECIFICATIONS: ALTERNATE SPECIFICATIONS ATTACHED.
 - 3.1. SPECIFICATION TO B E ADDED TO THE FOLLOWING ARTICLES: DESCRIPTION:
 - 1.1. #11931-2.01-A-5 SUBMERSIBLE WASTEWATER PUMPS
 - 1.1.1. HOMA PUMPS GRP26/3/C FM; SPECIFICATION ATTACHED.
 - 1.2. #16900-1.2-C CONTROL PANELS SINGLE INSTRUMENT SUPPLIER
 - 1.2.1. UNITRON CONTROL PANELS UL CERTIFICATION 508a NITW.E91877
 - 1.2.2. UL CERTIFICATION 698a INDUSTRIAL CONTROL PANELS RELATING TO HAZARDOUS LOCATIONS NRBX.E203039

THE BALANCE OF THIS PAGE IS INTENTIONALLY LEFT BLANK

CITY OF BELLE GLADE

A blue ink signature of Neil Appel, C.P.M., is written over a horizontal line.

Neil Appel, C.P.M.
Purchasing Manager

BIDDER

Signature

Printed, Title

COMPANY



Pre-Bid Conference Meeting Minutes

Bid # 02-2021	Name: Belle Glade Airport Lift Station Construction FDOT Joint Participation Agreement #442007-1-94-01
	Date 2/23/2021 Time: 10:00AM

Attendees:

Contractors:

See attached attendance sheet

City :

David Calle	DC	Kimley-Horn
Larry Tibbs	LT	Director of Finance, City of Belle Glade
Neil Appel	NA	Purchasing Manager, City of Belle Glade

The meeting commenced at 10:01 AM.

	1.	Introductions
LT	1.1	City Staff, bidders, and consultants introduced themselves.
NA	1.2	All attendees were cautioned that undocumented oral statements made during the meeting shall not be binding. Only those oral statements recorded in the meeting minutes shall be considered a part of the meeting and shall be binding in the context of their meaning.
	2	Bid Announced Opening Date and Time:
NA	2.1	Date: March 16th, 2021 @ 3:00PM
NA	2.2	Last day for questions: March 4 th , 2021 @3:00PM
NA	2.3	Bidders were informed that they must submit (1) original, three (3) copies and one flash drive of their bid submittals.
	3.	Instructions to Bidders
NA	3.1	Meeting Status: This is a mandatory pre-bid conference. Bid submittals from bidders who have not attended shall be rejected as non-responsive.
NA	3.2	Communications: The point of contact is <u>Neil Appel, Purchasing Manager</u> for the bid process. All communications are to be written and or emailed to nappel@belleglade-fl.com attention Neil Appel, Purchasing Manager. He will distribute to appropriate staff and upload all addendums to the City website
NA	3.3	Addendums: All addenda shall be issued through the City website. Questions received by the City less than ten (10) calendar days prior to the bid opening may not be answered. The City shall endeavor to not issue addenda within five (5) calendar days of the bid opening
	3.4	An addendum 1 will also include an alternate specification that may be used for the pump and control panel.



	4.	Scope of Work Review
LT		4.1 Reviewed the General Scope of Work with all attendees.

	5	Bid /Contract Security
NA	5.1	Bidder must submit a bid bond in the amount of 10% of the bid price using the enclosed City forms
NA	5.2	Not submitting a bid bond with the Bid submittal package will cause the bid to be rejected as non-conforming and non-responsive.
NA	5.3	A 100% Performance and Payment Bond is required from the awarded bidder, to be submitted with the executed agreement prior to Commission award.
NA	5.4	A letter from the bidder's Surety guarantying that the Surety will issue Performance and Payment for the bidder must be submitted with the bid.
NA	5.5	The Surety must be listed on the Federal List of Certified Companies or the bond and the bid will be rejected as non-responsive.
	6	Safety
NA	6.1	It is the contractor's responsibility to secure the construction site to prevent injury or theft.

	7	Bid Rejection; The following shall result in automatic bid rejection:
NA	7.1	Not signing your bid.
NA	7.2	Not attending the mandatory pre-bid conference.
NA	7.3	Not submitting a bid bond on the City form with Affidavit for Bond and Bond Power of Attorney.
NA	7.4	Submitting an unbalanced bid.
NA	7.5	Not submitting a letter from the firm's Surety stating that they will bond your firm for this bid.

	8	Work Hours
NA	8.1	The work hours are 6:00AM to 7:00PM.
NA	8.2	Changes require 24-hour notice to the City.

NA	9.	Bid Submittal Forms
NA	9.1	All bidders were reminded to review the checklist to submit all required forms.
NA	9.2	Most forms a contractor during the construction phase such as submittal forms, inspection forms, etc are included in the bid sample forms section.
NA	9.3	All bidders must submit using the City forms.
NA	9.4	Bidders were reminded to submit their licenses.
NA	9.5	Bidders must list their first tier/ major subcontractors on the subcontractor list.

	10	Utility Locations
NA	10.1	Contractor must verify all utility locations.

	11	Project Meetings
NA	11.1	Project meetings schedules and sites to be determined by the City Project Manager.



	13		Invoicing
NA		13.1	Reviewed Invoicing procedure with emphasis on the following:
NA		13.2	Progress payments shall be made on a monthly basis.
NA		13.3	A Schedule of Values and updated project schedule must be included with every payment request detailing:
NA		13.4	A preliminary payment request shall be submitted to the City engineering consultant electronically, (pdf format) for review prior to the actual payment request being submitted. This will speed up the payment process.

	13		Pricing
NA		13.1	Davis Bacon Wage rates are not included in this Invitation to Bid.
NA		13.2	Pricing is lump sum per LINE ITEM .

	14		Miscellaneous
NA		14.1	This is an FDOT funded project. Please review the FDOT requirements included in the bid documents.
NA		14.2	Staging will be available at the airport. The awarded bidder shall contact DC for details.
NA		14.3	Substantial completion shall be 112 calendar days. Final completion shall be 140 calendar days.
NA		14.4	Maintenance of traffic (MOT) shall be decided at the pre-construction meeting.
		14.5	Bidders do NOT have to be qualified by FDOT to bid and perform this project.

	15		Execution of Contract
NA		15.1	A Notice of Intent to Award will be sent to the successful bidder with the contracts to execute.
NA		15.2	The City reserves the right to reduce or eliminate line items prior to and after the award.

TECHNICAL SPECIFICATION REVIEW

DC Kimley Horn

1. The project scope of work was discussed (removal of septic tanks and existing connections, installation of new PVC sewer, new lift station, new connection to existing force-main, new water service connection to serve the lift station, etc.)
2. Contractor to identify the bathroom connection to the metal storage building on the west site of the airport site. The connection location was not able to be verified during design
3. It is recommended that the Contractor familiarize themselves with the requirements of the various permits appended to the technical specifications
4. Contractor's surveyor will be required to submit a sketch and description of the easement to be approved by the County and then submit approved easement for recording
5. It is recommended that the Contractor familiarize themselves with the geotechnical report appended to the technical specifications



The meeting adjourned at 10:15AM to the airport where a site inspection was then conducted

Respectfully submitted,

A handwritten signature in blue ink, appearing to read "Neil Appel", written over a horizontal line.

Neil Appel, C.P.M.
Purchasing Manager

If we do not receive correspondence regarding the accuracy of these minutes within 24 hours, we will assume they have been accepted as correct.



PRE-BID CONFERENCE SIGN-IN SHEET

PROJECT #: 02-2021 PROJECT NAME: BELLE GLADE AIRPORT LIFT STATION CONSTRUCTION DATE: 2/23/2021

Representative	Company	Address	Phone/Fax	Email
1 Jesse Garza	Almazan Construction	2771 Vista Parkway Fl West Palm Beach, FL 33411	561-319-1293	JGARZA@AlmazanConstruction.com
2 Bart Perryman	Midway Corp	657 74th St B6L 4208 NW 3rd St	996 6100 996 8819 F	Midwaybg@Sellsouth.com not
3 Melissa Stone	Boroni Construction	Okechobee FL 34972	863-423-4314	Melissa@boroniconstruction.com
4 Mike Carter	Hinterland Group	2051 Blue Heron Blvd Riviera Beach FL 33401	561-420-4729	mcarter@hinterlandgroup.com
5 Dewain Akerblom	Akerblom Contracting Inc	2064 SW 28th terrace Fort Lauderdale FL 33312	954-224-1766	Info@hinterlandgroup.com → Rakerblom@aol.com
6 Larry Tibbs	CORC			
7 Fred Meyer	CORC			
8 David Calle	Kimley-Horn			
9				
10				
11				
12				
13				
14				

NITW.E91877 - INDUSTRIAL CONTROL PANELS

Industrial Control Panels

See General Information for Industrial Control Panels

BARNEY'S PUMPS INC

E91877

2965 Barneys Pumps Pl
Lakeland, FL 33802-3529 USA
Industrial control panels.

Trademark and/or Tradename: "A DIVISION OF BARNEY'S PUMPS, INC."

Last Updated on 2010-07-22

The appearance of a company's name or product in this database does not in itself assure that products so identified have been manufactured under UL's Follow-Up Service. Only those products bearing the UL Mark should be considered to be Certified and covered under UL's Follow-Up Service. Always look for the Mark on the product.

UL permits the reproduction of the material contained in the Online Certification Directory subject to the following conditions: 1. The Guide Information, Assemblies, Constructions, Designs, Systems, and/or Certifications (files) must be presented in their entirety and in a non-misleading manner, without any manipulation of the data (or drawings). 2. The statement "Reprinted from the Online Certifications Directory with permission from UL" must appear adjacent to the extracted material. In addition, the reprinted material must include a copyright notice in the following format: "© 2019 UL LLC"

NRBX.E203039 - INDUSTRIAL CONTROL PANELS RELATING TO HAZARDOUS LOCATIONS

Industrial Control Panels Relating to Hazardous Locations

See General Information for Industrial Control Panels Relating to Hazardous Locations

BARNEY'S PUMPS INC

E203039

2965 Barneys Pumps Pl

Lakeland, FL 33802-3529 USA

Intrinsically safe circuit extensions, Model(s) Class I, Groups A, B, C, D; Class II, Groups E, F, G; Class III

Last Updated on 2017-08-30

The appearance of a company's name or product in this database does not in itself assure that products so identified have been manufactured under UL's Follow-Up Service. Only those products bearing the UL Mark should be considered to be Certified and covered under UL's Follow-Up Service. Always look for the Mark on the product.

UL permits the reproduction of the material contained in the Online Certification Directory subject to the following conditions: 1. The Guide Information, Assemblies, Constructions, Designs, Systems, and/or Certifications (files) must be presented in their entirety and in a non-misleading manner, without any manipulation of the data (or drawings). 2. The statement "Reprinted from the Online Certifications Directory with permission from UL" must appear adjacent to the extracted material. In addition, the reprinted material must include a copyright notice in the following format: "© 2019 UL LLC"

Technical Information

GRP26/3/C FM

Operating data

Flow	55 US g.p.m.
Head	52 ft
Shaft power P2	2.22 hp
Pump efficiency	42.4 %
Required pump NPSH	
Pump type	Single pump
No. of pumps	1
Fluid	Water, clean

Pump

Pump Code	GRP26/3/C FM
Impeller	Vane impeller with cutter sys.
Impeller size	138 mm
Solid size	
Discharge port	2" M
Suction port	

Motor

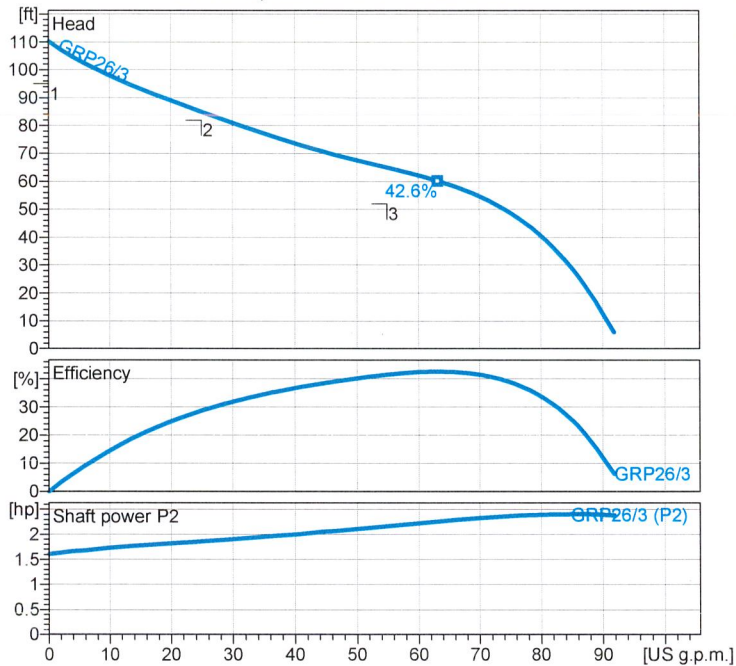
Rated voltage	230 / 460 V
Frequency	60 Hz
Rated power P2	2.5 hp
Rated speed	3450 rpm
Number of poles	2
Efficiency	76 %
Rated current	8.4 / 4.2 A
Degree of protection	IP 68

Materials

Motor housing	Cast Iron ASTM A48; CI.40B
Motor bearing cover	Cast Iron ASTM A48; CI.40B
Pump housing	Cast Iron ASTM A48; CI.40B
Impeller	Cast Iron ASTM A48; CI.40B
Cutting system	Hardened Stainless Steel HRC55
Motor shaft	AISI 430 F Stainless Steel
O-Rings	Nitrile Rubber
Bolts	AISI 304 Stainless Steel

Mechanical seal on medium side	SiC / SiC
Mechanical seal on motor side	SiC / SiC
Lower Bearing	Double row angular ball bearing
Upper Bearing	Deep Groove Ball Bearing

Testnorm: P2>10kW, HI-Standard Grade 2B
P2<10kW, HI Standard Sect.14.6.3.4.1



Wet well installation with coupling 2Z-1Z (GRP24...26)
Maße in mm [inch], Buchstaben siehe Tabelle

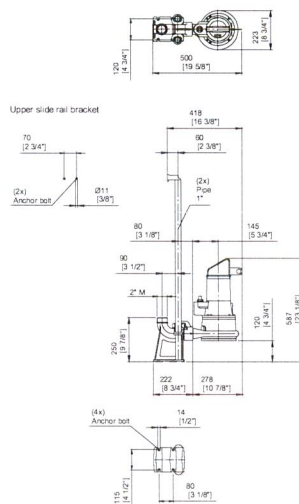


Table Dimensions
(mm)

2.0.1 - 17.01.2017 (Build 147)

Project

Project no.:

Created by:

Page:

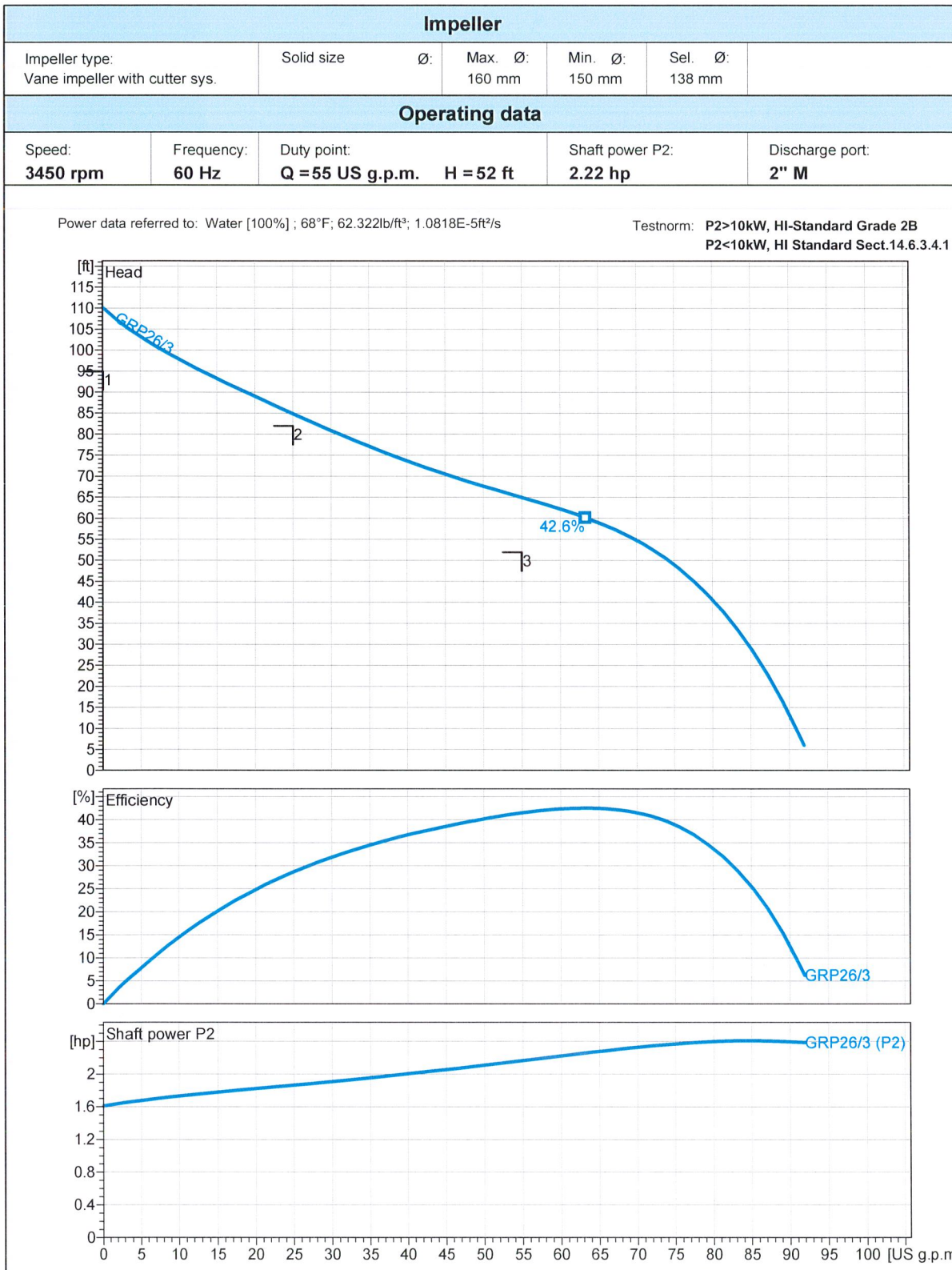
Date:

1

2021-02-16

Performance Curve

GRP26/3/C FM



2.0.1 - 17.01.2017 (Build 147)

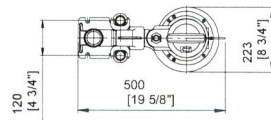
Project	Project no.:	Created by:	Page: 2	Date: 2021-02-16
---------	--------------	-------------	------------	---------------------

Dimensions

GRP26/3/C FM

Wet well installation with coupling 2Z-1Z (GRP24...26)

Maße in mm [inch], Buchstaben siehe Tabelle



Upper slide rail bracket

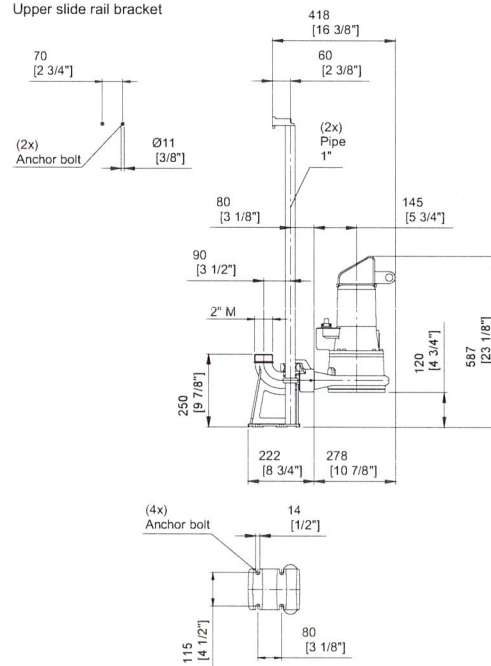


Table Dimensions (mm)

2.0.1 - 17.01.2017 (Build 147)

Project	Project no.:	Created by:	Page: 3	Date: 2021-02-16
---------	--------------	-------------	------------	---------------------

Technical Data

GRP26/3/C FM



Operating data					
Flow	55	US g.p.m.	Head	52	ft
Shaft power P2	2.2	hp	Static head	0	ft
Pump efficiency	42.4	%	Required pump NPSH		ft
Pumpe type	Single pump		No. of pumps	1	
Fluid	Water, clean		Temperature	68 °F	
Density	62.32	lb/ft³	Kin. viscosity	1.082E-5	ft²/s

Pump					
Pump Code	GRP26/3/C FM	Speed	3450 rpm		
Suction port	2" M	Head	Max.	110.2	ft
Discharge port			Min.	6.0	ft
Impeller type	Vane impeller with cutter sys.	Flow	Max.	91.9	US g.p.m.
Solid size	mm	Pump efficiency max.	42.6 %		
Impeller Ø	138 mm	Required rated power max. P2	2.4 hp		

Motor						
Motor version	Submersible motor		Insulation class		H	
Motor name	AM122.3,8/2/3		Degree of protection		IP 68	
Frequency	60	Hz	Temperature class		T4	
Rated power P1	3.4	hp	NEMA code		F	
Rated power P2	2.5	hp	Explosion protection		Class I, Div. 1, Grp. C&D	
Rated speed	3450	rpm	Efficiency at % rated power	100%	76	%
Rated voltage	230	/ 460 V 3~		75%		%
Rated current	8.4	/ 4,2 A		50%		%
Starting current, direct starting	42.0	/ 21,0 A	cos phi at % rated power	100%	0.78	
Starting current, star-delta		A		75%		
Starting mode	Directly			50%		
Power cable	7X1,5 / 10G1,5		Control cable		2X1,5 / -	
Type of power cable	NSSHÖU-J / H07RN8-F PLUS		Type of control cable		ÖLFLEX-EB / -	
Cable length	32.809 ft		Service factor		1.15	
Shaft seal	Mechanical seal on medium side		SiC / SiC			
	Mechanical seal on motor side		SiC / SiC			
Bearing	Lower Bearing		Double row angular ball bearing			
	Upper Bearing		Deep Groove Ball Bearing			
Remarks						

Materials / Weight			
Motor housing	Cast Iron ASTM A48;CI.40B	Motor shaft	AISI 430 F Stainless Steel
Pump housing	Cast Iron ASTM A48;CI.40B	Bolts	AISI 304 Stainless Steel
Motor bearing cover	Cast Iron ASTM A48;CI.40B	O-Rings	Nitrile Rubber
Impeller	Cast Iron ASTM A48;CI.40B		
Cutting system	Hardened Stainless Stell HRC55		
Weight aggregat	72.751 lb		

Project	Project no.:	Created by:	Page: 4	Date: 2021-02-16
---------	--------------	-------------	---------	------------------

20.1 - 17.01.2017 (Build 147)