

## 1.0 PROJECT LOCATION

This Project is located at the various sites within Belle Glade, Florida, that are set forth in the list of "Schedule of Values," "Roadways to be Resurfaced" and "Project Locations Map(s)."

### A. DELETED

### B. Specifications:

1. Asphalt is to be installed in accordance with all applicable current FDOT Specifications and City of Belle Glade Construction Specifications.
2. The final product/result is to resurface the roadways listed within a minimum of 1 1/2-inch asphaltic surface with improved roadway surface texture and slight grade irregularities.
3. The roadways are to be resurfaced/overlayed utilizing an asphaltic mixture, to be approved by the City and FDOT prior to installation.
4. The resurfaced asphalt mixture is to be SP 12 or Equivalent.
5. The resurfacing is to be either completed by milling a minimum of 2-inches / max of 6-inches with drive course to follow, or to clean, prime and resurface the existing streets.
  - i. If an overlay of the existing roadway is approved for resurfacing, the Contactor shall minimize the elevation drop off (post overlay) between the edge of pavement and existing shoulder/grades. Additionally, the Contractor shall notify the City/Public Works Department and identify the locations where additional fill shall be added to reduce said drop off.
  - ii. On roadways that have concrete curb or gutter along the edge of pavement, the Contractor shall be required to mill along the concrete-asphalt transition to provide minimum elevation differences between transitions.
  - iii. All elevation differences along edge of pavements, existing shoulders and grades shall not exceed the allowable per FDOT Standards and Specifications.
6. The milling shall be in accordance with FDOT Specifications.
7. Millings can be utilized in the resurfacing asphalt mix, containing up to 40% recycled material.
8. Although milling the existing roadway is preferred, it is not required.
9. The existing roadways may be resurfaced with either method utilized, although the general intent is to remove the majority of roadway grade, excessive slopes, and failure irregularities.
10. Roadway lengths shown on the "Schedule of Values" and "Roadways to be Resurfaced" lists are to be field verified/confirmed by the Contractor prior to bidding and are to be resurfaced to match existing roadway lengths.
  - i. Roadway lengths are approximated (+/- 10'-0") and shall be used to assist the Contractor during bidding (all lengths shall be field verified). The Contractor is responsible for conducting pre-bid site investigations on all roadways to verify all information provided on the "Schedule of Values" and "Roadways to be Resurfaced" lists. The Contractor shall adjust Bid Price as necessary to complete the required work before submitting a Bid. Bid Items/Lump Sum amounts shall include ALL restoration work required to fully complete resurfacing (including traffic light signalization/loop repairs) as per all requirements listed in these Bid Documents.

- ii. For all roadways, the Contractor shall resurface ALL asphalt between the intersections/roadway limits specified including the intersections at those limits and all intersections between those limits. Resurfacing shall extend through ALL intersections including ALL travel lanes and ALL points of roadway curvatures in ALL directions (except when specified otherwise).
  - iii. Any discrepancies in the City supplied length tables shall be brought to the attention of the City/Engineer DURING THE BIDDING PROCESS and prior to submitting a Bid. Failure to do so shall not alleviate the Contractor from performing said Work at the Lump Sum amounts submitted per the awarded Bid.
11. Roadway widths shown on the "Schedule of Values" and "Roadways to be Resurfaced" lists are to be field verified/confirmed by the Contractor prior to bidding and to be resurfaced to match existing roadway widths.
- i. Roadway widths are approximated (+/- 5'-0") and shall be used to assist the Contractor during bidding (all widths shall be field verified). The Contractor is responsible for conducting pre-bid site investigations on all roadways to verify all information provided on the "Schedule of Values" and "Roadways to be Resurfaced" lists. The Contractor shall adjust Bid Price as necessary to complete the required work before submitting a Bid. Bid Items/Lump Sum amounts shall include ALL restoration work required to fully complete resurfacing (including traffic light signalization/loop repairs) as per all requirements listed in these Bid Documents.
  - ii. For all roadways, the Contractor shall resurface ALL asphalt from edge of pavement to edge of pavement (or from curb and/or sidewalk) within the public right-of-way, including street/parallel parking areas. Resurfacing limits shall stop at residential driveways and non-street parking lot areas; however, adjustments to driveway transitions/harmonization shall be made, as necessary.
  - iii. Any discrepancies in the City supplied width tables shall be brought to the attention of the City/Engineer DURING THE BIDDING PROCESS and prior to submitting a Bid. Failure to do so shall not alleviate the Contractor from performing said Work at the Lump Sum amounts submitted per the awarded Bid.
12. Striping shall be as required by the "Proposed Resurfacing Roadway Typical Section" and any other applicable FDOT Specifications. Thermoplastic striping is not required unless the existing roadway utilizes such material.
- i. At a minimum, the Contractor shall follow the guidelines set forth on the typical roadway cross section detail (yellow skip stripe along roadway centerline and white solid stripe along edge of travel lane). On roadways with more than two lanes that require additional striping, existing striping should be matched. For all cases, the Contractor shall meet the minimum requirements set forth in FDOT guidelines and design standards.
  - ii. The Contractor shall restripe ALL roadways being resurfaced. Additionally, ALL stops at ALL intersections passing through the project shall be restriped as well – this includes white stop bars and double yellow markings for one-way, two-way, three-way and/or four-way stop intersections. NOTE: roadways with stops that are not directly being resurfaced but pass through the proposed street being resurfaced WILL REQUIRE new stop bars and double yellow markings.
13. The typical section attached is to be utilized for all roadway resurfacing (see provided detail – "Proposed Resurfacing Roadway Typical Section").
14. The awarded bidder shall provide a Pre-Construction Video.

**Financial Management Number: 446249-1-54-01**

**Glades Area Street Resurfacing and Reconstruction**

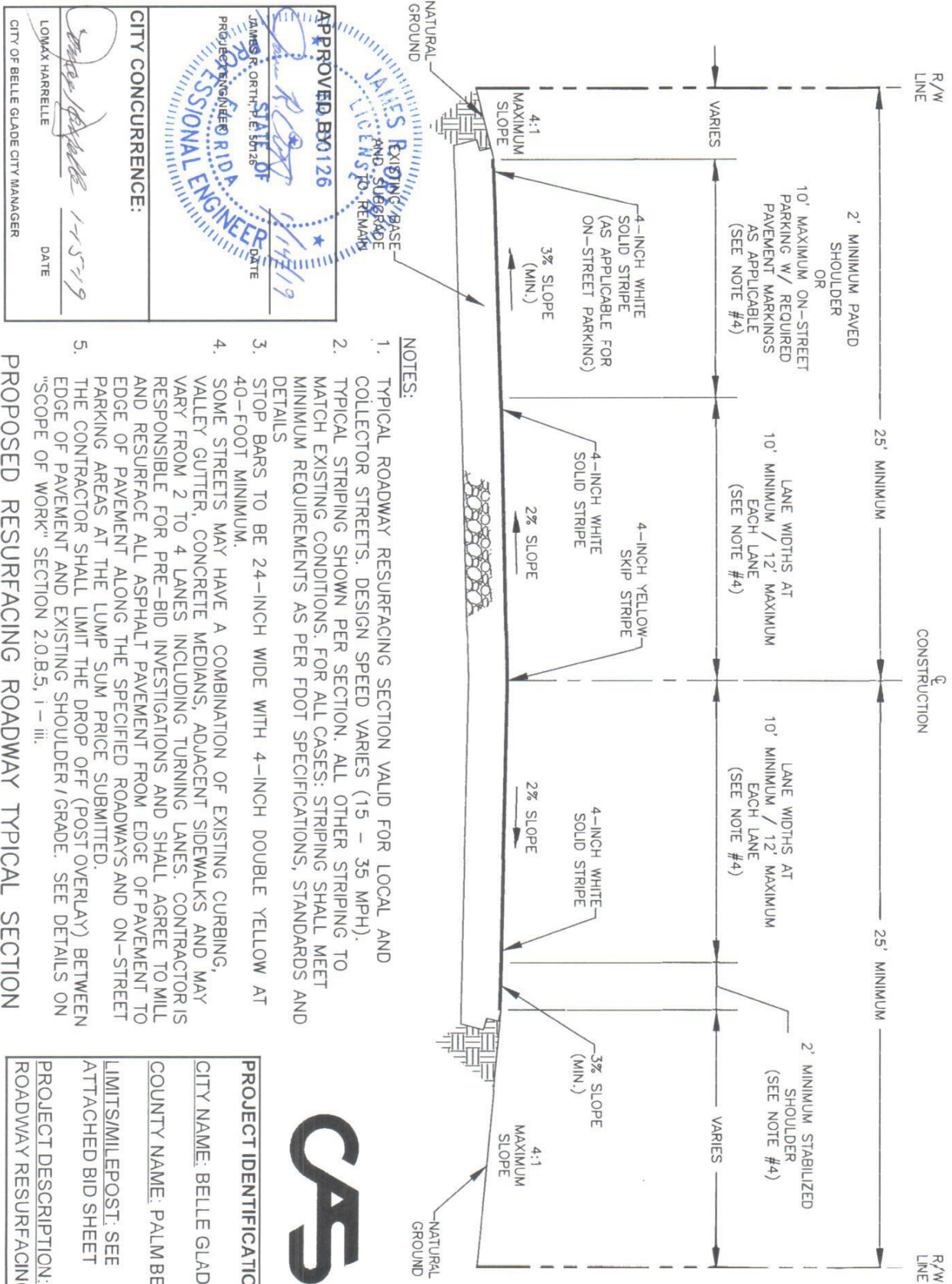
All work is within the City's right-of-way

**ROADWAYS TO BE RESURFACED**

<b>ITEM NO.</b>	<b>ROADWAYS TO BE RESURFACED</b>	<b>RESURFACING LIMIT</b>	<b>PROJECT LENGTH (FT)</b>	<b>RDWY WIDTH (FT)</b>	<b>SPEED LIMIT (MPH)</b>
1	NE 18th St	Airport Rd south to termination	1,250	24	15
2	NE 22nd St	North to South	1,155	24	15
3	NE 23rd St	Airport Rd south to termination	1,248	24	15
4	NE 26th St	North to South	1,179	24	15
5	NE 28th St	North to South	1,173	24	15
6	NE 31st St	North to South	1,110	24	15
7	NE 32nd St	Airport Rd south to termination	1,327	24	15
8	NW Ave F	NW 14th St to HWY 715 (NW 16th St)	632	24	15
9	NW Ave F Pl	NW 14th St to HWY 715 (NW 16th St)	635	24	15
10	NW Ave G	NW 14th St to HWY 715 (NW 16th St)	629	24	15
11	SW 5th St	MLK north to Ave A	1,254	48	15
12	SW 15th Dr	SW Ave H north to termination	466	24	15
13	SW 10th St	SW Ave J to SW Ave I	240	24	15
14	NE Ave I	NE 1st St west to termination	395	24	15
15	NE Ave G	NE 1st St west to termination	239	24	15
16	Hillsboro St	NW Ave L south to W Canal St N	2,504	36	15
17	NW 9th St	W Canal St N east to Hillsboro St	570	60	15

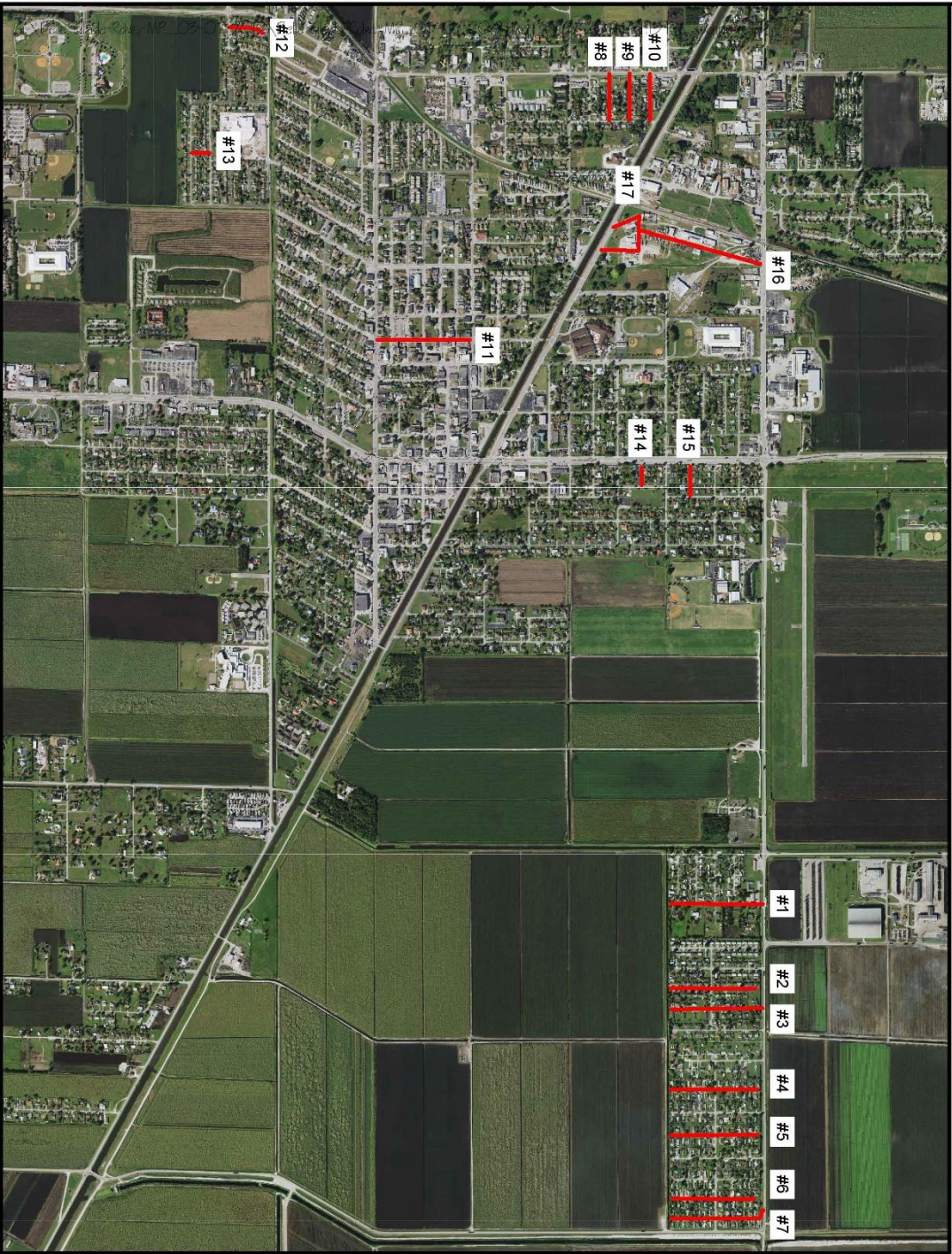
# DRAWING-PROPOSED RESURFACING ROADWAY TYPICAL SECTION

\\cas-depot\projects\cities\_villages\_towns\ville glade\michigan\roadway\resurfacing\drawing\roadway\_resurfacing.dwg, 11/10/2010 2:12:31 PM, mmmmmmm, 1:1





RESURFACING CITY OF BELLE GLADE ROADWAYS



FDOT SCOP  
(FY: 2020 - 2021)  
CITY OF BELLE GLADE

— Proposed Resurfacing Limits



ADDITIONAL INFORMATION:

PROJECT TITLE: RESURFACING  
CITY OF BELLE GLADE ROADWAYS  
(VARIOUS LOCATIONS)  
BID ITEMS NO. 1 - 17  
FDOT PROJECT NO. 446249-1-54-01

NOTE: RESURFACING LIMITS SHALL INCLUDE ALL ASPHALT PAVEMENT WITHIN THE RIGHT-OF-WAY AND START/STOP AT LIMITS SHOWN/SPECIFIED. EXTEND RESURFACING THRU ALL INTERSECTIONS, ALL TRAVEL LANES AND ALL POINTS OF ROADWAY CURVATURES IN ALL DIRECTIONS (EXCEPT WHEN SPECIFIED OTHERWISE). STOP BARS AND DOUBLE YELLOW PAVEMENT MARKINGS TO BE INSTALLED AT ALL INTERSECTIONS, EACH WAY.



# RESURFACING CITY OF BELLE GLADE ROADWAYS



— Proposed Resurfacing Limits



## ADDITIONAL INFORMATION:

PROJECT TITLE: RESURFACING  
CITY OF BELLE GLADE ROADWAYS  
(VARIOUS LOCATIONS)  
BID ITEM NO. 1  
FDOT PROJECT NO. 446249-1-54-01

**NOTE:** RESURFACING LIMITS TO START AT DEAD END AND STOP AT AIRPORT RD TIE-IN/EDGE OF PAVEMENT ALIGNMENT. EXTEND RESURFACING THRU ALL INTERSECTIONS. ALL TRAVEL LANES AND ALL POINTS OF ROADWAY CURVATURES IN ALL DIRECTIONS (EXCEPT AT AIRPORT RD). STOP BARS AND DOUBLE YELLOW PAVEMENT MARKINGS TO BE INSTALLED AT ALL INTERSECTIONS, EACH WAY.



# RESURFACING CITY OF BELLE GLADE ROADWAYS



— Proposed Resurfacing Limits



## ADDITIONAL INFORMATION:

PROJECT TITLE: RESURFACING  
CITY OF BELLE GLADE ROADWAYS  
(VARIOUS LOCATIONS)  
BID ITEM NO. 2  
FDOT PROJECT NO. 448249-1-54-01

**NOTE:** RESURFACING LIMITS TO START AT DEAD END AND STOP AT DEAD END. EXTEND RESURFACING THRU ALL INTERSECTIONS, ALL TRAVEL LANES AND ALL POINTS OF ROADWAY CURVATURES IN ALL DIRECTIONS. STOP BARS AND DOUBLE YELLOW PAVEMENT MARKINGS TO BE INSTALLED AT ALL INTERSECTIONS, EACH WAY.



# RESURFACING CITY OF BELLE GLADE ROADWAYS



— Proposed Resurfacing Limits



## ADDITIONAL INFORMATION:

PROJECT TITLE: RESURFACING  
CITY OF BELLE GLADE ROADWAYS  
(VARIOUS LOCATIONS)  
BID ITEM NO. 3  
FDOT PROJECT NO. 446249-1-54-01

**NOTE:** RESURFACING LIMITS TO START AT DEAD END AND STOP AT AIRPORT RD TIE-IN/EDGE OF PAVEMENT ALIGNMENT. EXTEND RESURFACING THRU ALL INTERSECTIONS. ALL TRAVEL LANES AND ALL POINTS OF ROADWAY CURVATURES IN ALL DIRECTIONS (EXCEPT AT AIRPORT RD). STOP BARS AND DOUBLE YELLOW PAVEMENT MARKINGS TO BE INSTALLED AT ALL INTERSECTIONS, EACH WAY.



# RESURFACING CITY OF BELLE GLADE ROADWAYS



— Proposed Resurfacing Limits



## ADDITIONAL INFORMATION:

PROJECT TITLE: RESURFACING  
CITY OF BELLE GLADE ROADWAYS  
(VARIOUS LOCATIONS)  
BID ITEM NO. 4  
FDOT PROJECT NO. 446249-1-54-01

**NOTE:** RESURFACING LIMITS TO START AT DEAD END AND STOP AT DEAD END. EXTEND RESURFACING THRU ALL INTERSECTIONS, ALL TRAVEL LANES AND ALL POINTS OF ROADWAY CURVATURES IN ALL DIRECTIONS. STOP BARS AND DOUBLE YELLOW PAVEMENT MARKINGS TO BE INSTALLED AT ALL INTERSECTIONS, EACH WAY.



# RESURFACING CITY OF BELLE GLADE ROADWAYS



— Proposed Resurfacing Limits

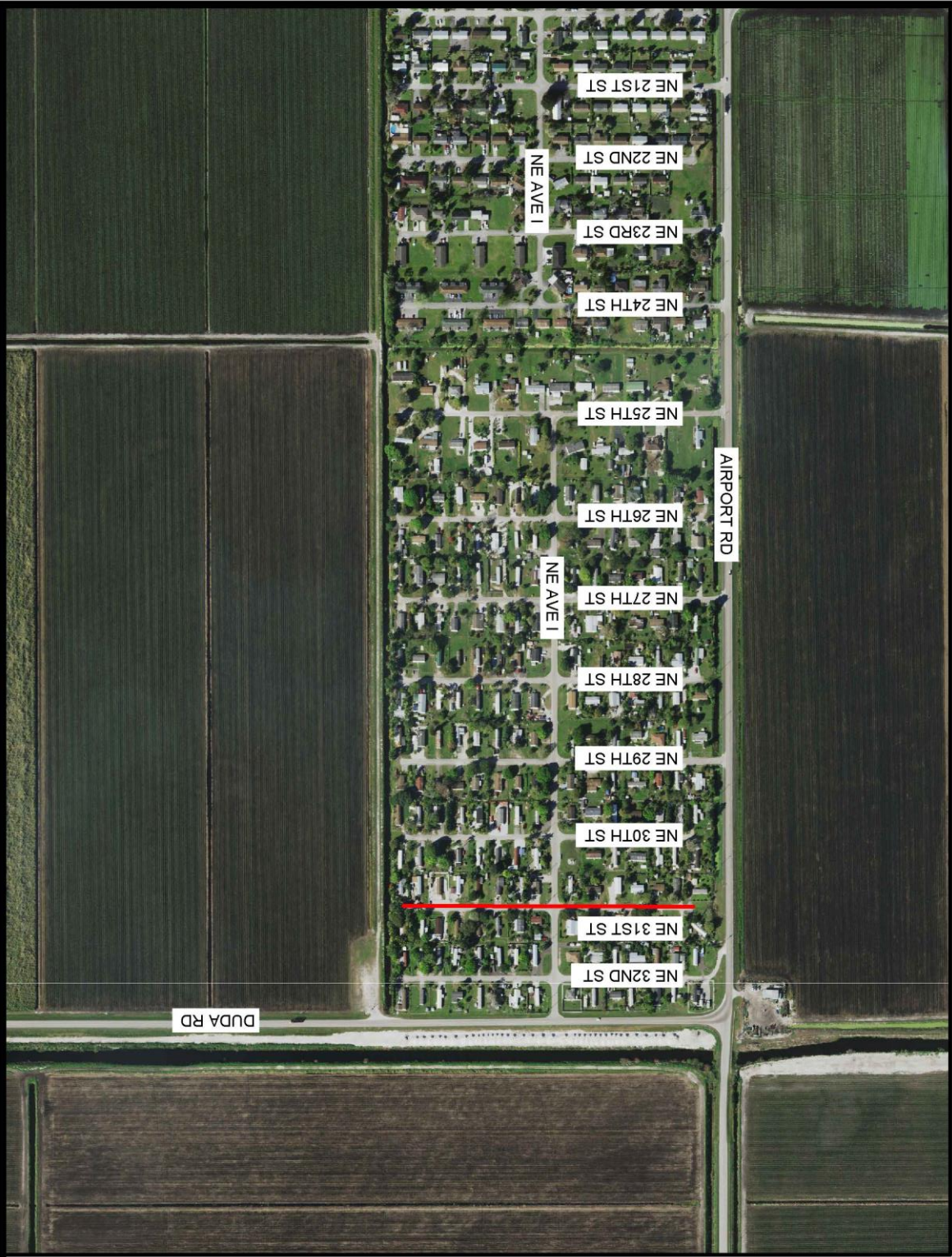


ADDITIONAL INFORMATION:  
PROJECT TITLE: RESURFACING  
CITY OF BELLE GLADE ROADWAYS  
(VARIOUS LOCATIONS)  
BID ITEM NO. 5  
FDOT PROJECT NO. 446249-1-54-01

**NOTE:** RESURFACING LIMITS TO START AT DEAD END AND STOP AT DEAD END. EXTEND RESURFACING THRU ALL INTERSECTIONS, ALL TRAVEL LANES AND ALL POINTS OF ROADWAY CURVATURES IN ALL DIRECTIONS. STOP BARS AND DOUBLE YELLOW PAVEMENT MARKINGS TO BE INSTALLED AT ALL INTERSECTIONS, EACH WAY.



# RESURFACING CITY OF BELLE GLADE ROADWAYS



— Proposed Resurfacing Limits



ADDITIONAL INFORMATION:  
PROJECT TITLE: RESURFACING  
CITY OF BELLE GLADE ROADWAYS  
(VARIOUS LOCATIONS)  
BID ITEM NO. 6  
FDOT PROJECT NO. 446249-1-54-01

**NOTE:** RESURFACING LIMITS TO START AT DEAD END AND STOP AT DEAD END. EXTEND RESURFACING THRU ALL INTERSECTIONS, ALL TRAVEL LANES AND ALL POINTS OF ROADWAY CURVATURES IN ALL DIRECTIONS. STOP BARS AND DOUBLE YELLOW PAVEMENT MARKINGS TO BE INSTALLED AT ALL INTERSECTIONS, EACH WAY.



# RESURFACING CITY OF BELLE GLADE ROADWAYS



— Proposed Resurfacing Limits



ADDITIONAL INFORMATION:  
PROJECT TITLE: RESURFACING  
CITY OF BELLE GLADE ROADWAYS  
(VARIOUS LOCATIONS)  
BID ITEM NO. 7  
FDOT PROJECT NO. 446249-1-54-01

**NOTE:** RESURFACING LIMITS TO START AT DEAD END AND STOP AT AIRPORT RD TIE-IN/EDGE OF PAVEMENT ALIGNMENT. EXTEND RESURFACING THRU ALL INTERSECTIONS. ALL TRAVEL LANES AND ALL POINTS OF ROADWAY CURVATURES IN ALL DIRECTIONS (EXCEPT AT AIRPORT RD). STOP BARS AND DOUBLE YELLOW PAVEMENT MARKINGS TO BE INSTALLED AT ALL INTERSECTIONS, EACH WAY.



## An aerial photograph of a residential neighborhood. The map shows a grid of streets including NW 17th St, NW 16th St, NW 14th St, NW Ave F, NW Ave G, NW Ave PL, and NW Ave F. A red line is drawn vertically on the left side of the map, passing through NW Ave F. The area is characterized by numerous houses, green lawns, and trees. A large body of water, likely a canal, runs diagonally across the lower right portion of the image. The labels for the streets are placed directly on the map, oriented horizontally.



PROJECT TITLE: RESURFACING  
CITY OF BELLE GLADE ROADWAYS  
(VARIOUS LOCATIONS)  
BID ITEM NO. 8  
EDOT PROJECT NO. 446249-1-54-01



# RESURFACING CITY OF BELLE GLADE ROADWAYS



— Proposed Resurfacing Limits



## ADDITIONAL INFORMATION:

PROJECT TITLE: RESURFACING  
CITY OF BELLE GLADE ROADWAYS  
(VARIOUS LOCATIONS)  
BID ITEM NO. 9  
FDOT PROJECT NO. 446249-1-54-01

**NOTE:** RESURFACING LIMITS TO START AT NW 14TH ST AND STOP AT NW 16TH ST TIE-IN/EDGE OF PAVEMENT ALIGNMENT. EXTEND RESURFACING THRU ALL INTERSECTIONS. ALL TRAVEL LANES AND ALL POINTS OF ROADWAY CURVATURES IN ALL DIRECTIONS (EXCEPT AT NW 16TH ST). STOP BARS AND DOUBLE YELLOW PAVEMENT MARKINGS TO BE INSTALLED AT ALL INTERSECTIONS, EACH WAY.



# RESURFACING CITY OF BELLE GLADE ROADWAYS



— Proposed Resurfacing Limits

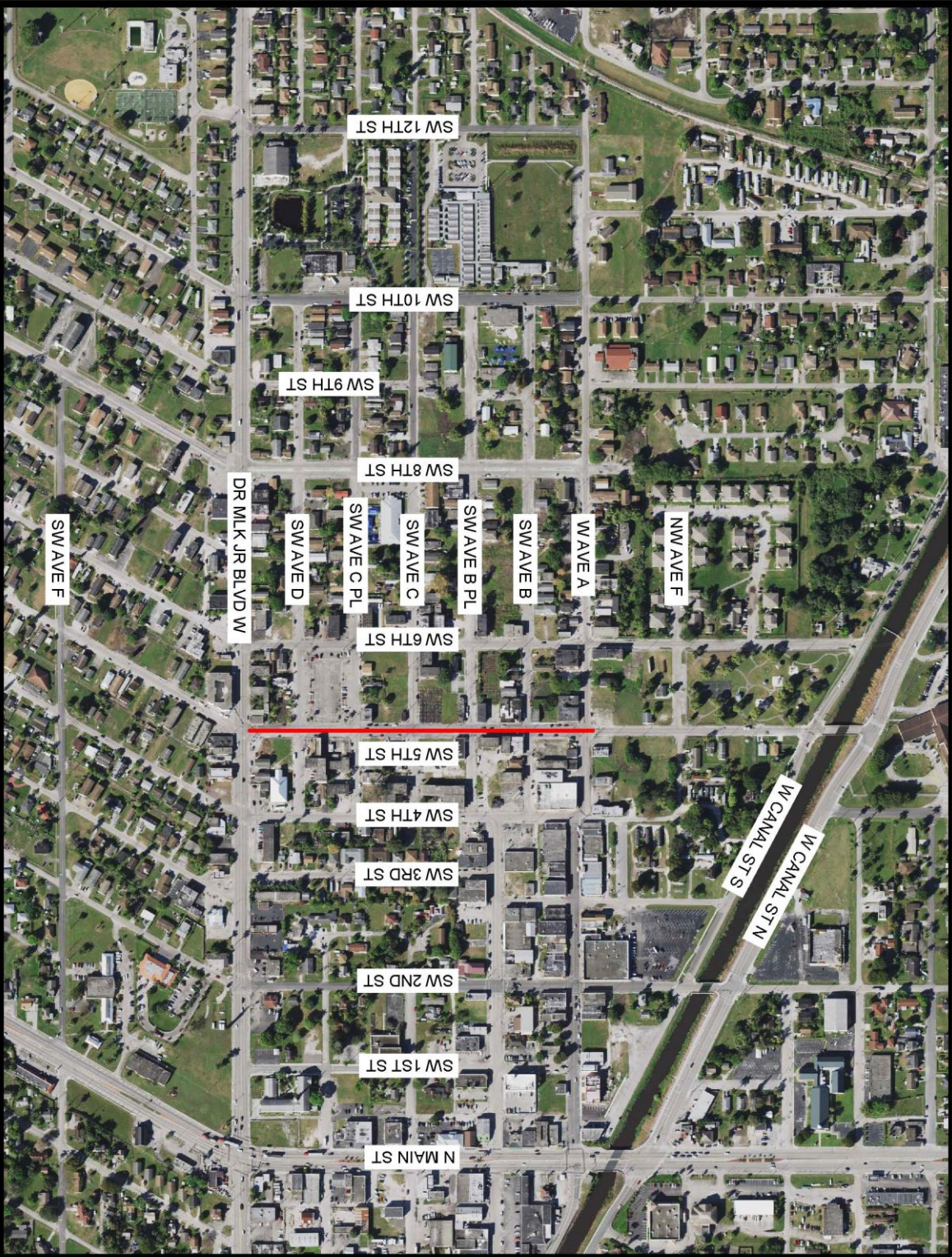


ADDITIONAL INFORMATION:  
PROJECT TITLE: RESURFACING  
CITY OF BELLE GLADE ROADWAYS  
(VARIOUS LOCATIONS)  
BID ITEM NO. 10  
FDOT PROJECT NO. 446249-1-54-01

**NOTE:** RESURFACING LIMITS TO START AT NW 14TH ST AND STOP AT NW 16TH ST TIE-IN/EDGE OF PAVEMENT ALIGNMENT. EXTEND RESURFACING THRU ALL INTERSECTIONS, ALL TRAVEL LANES AND ALL POINTS OF ROADWAY CURVATURES IN ALL DIRECTIONS (EXCEPT AT NW 16TH ST). STOP BARS AND DOUBLE YELLOW PAVEMENT MARKINGS TO BE INSTALLED AT ALL INTERSECTIONS, EACH WAY.



# RESURFACING CITY OF BELLE GLADE ROADWAYS



— Proposed Resurfacing Limits



ADDITIONAL INFORMATION:  
PROJECT TITLE: RESURFACING  
CITY OF BELLE GLADE ROADWAYS  
(VARIOUS LOCATIONS)  
BID ITEM NO. 11  
FDOT PROJECT NO. 446249-1-54-01

**NOTE:** RESURFACING LIMITS TO START AT W AVE A AND STOP AT DR MLK JR BLVD W TIE-IN/EDGE OF PAVEMENT ALIGNMENT. EXTEND RESURFACING THRU ALL INTERSECTIONS, ALL TRAVEL LANES AND ALL POINTS OF ROADWAY CURVATURES IN ALL DIRECTIONS (EXCEPT AT DR MLK JR BLVD W). STOP BARS AND DOUBLE YELLOW/PAVEMENT MARKINGS TO BE INSTALLED AT ALL INTERSECTIONS, EACH WAY.



# RESURFACING CITY OF BELLE GLADE ROADWAYS



— Proposed Resurfacing Limits



ADDITIONAL INFORMATION:  
PROJECT TITLE: RESURFACING  
CITY OF BELLE GLADE ROADWAYS  
(VARIOUS LOCATIONS)  
BID ITEM NO. 12  
FDOT PROJECT NO. 446249-1-54-01

**NOTE:** RESURFACING LIMITS TO START AT SW AVE H AND STOP AT DEAD END. EXTEND RESURFACING THRU ALL INTERSECTIONS. ALL TRAVEL LANES AND ALL POINTS OF ROADWAY CURVATURES IN ALL DIRECTIONS. STOP BARS AND DOUBLE YELLOW PAVEMENT MARKINGS TO BE INSTALLED AT ALL INTERSECTIONS, EACH WAY.



# RESURFACING CITY OF BELLE GLADE ROADWAYS



— Proposed Resurfacing Limits

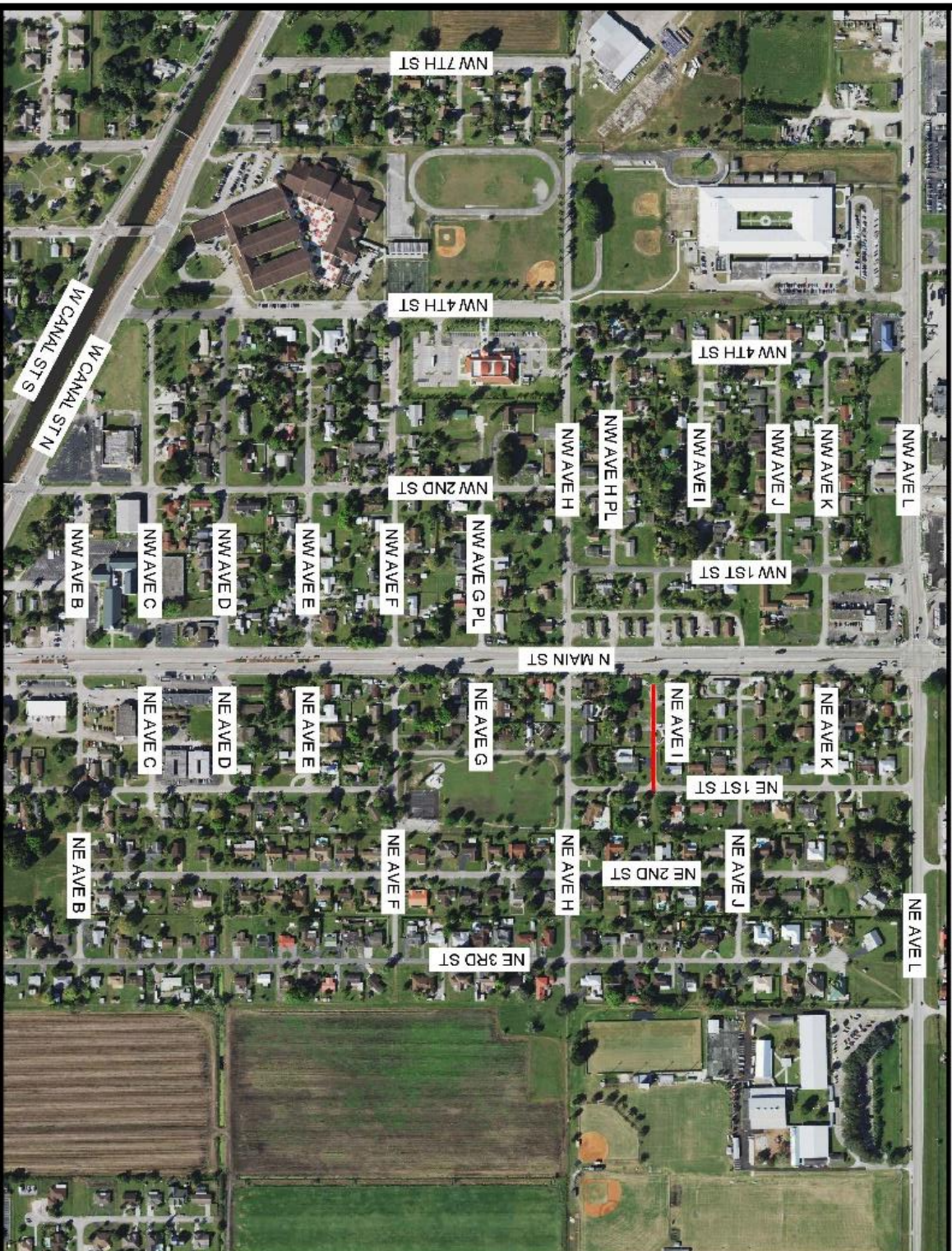


ADDITIONAL INFORMATION:  
PROJECT TITLE: RESURFACING  
CITY OF BELLE GLADE ROADWAYS  
(VARIOUS LOCATIONS)  
BID ITEM NO. 13  
FDOT PROJECT NO. 446249-1-54-01

**NOTE:** RESURFACING LIMITS TO START AT SW AVE I AND STOP AT SW AVE J. EXTEND RESURFACING THRU ALL INTERSECTIONS, ALL TRAVEL LANES AND ALL POINTS OF ROADWAY CURVATURES IN ALL DIRECTIONS. STOP BARS AND DOUBLE YELLOW PAVEMENT MARKINGS TO BE INSTALLED AT ALL INTERSECTIONS, EACH WAY.



# RESURFACING CITY OF BELLE GLADE ROADWAYS



— Proposed Resurfacing Limits

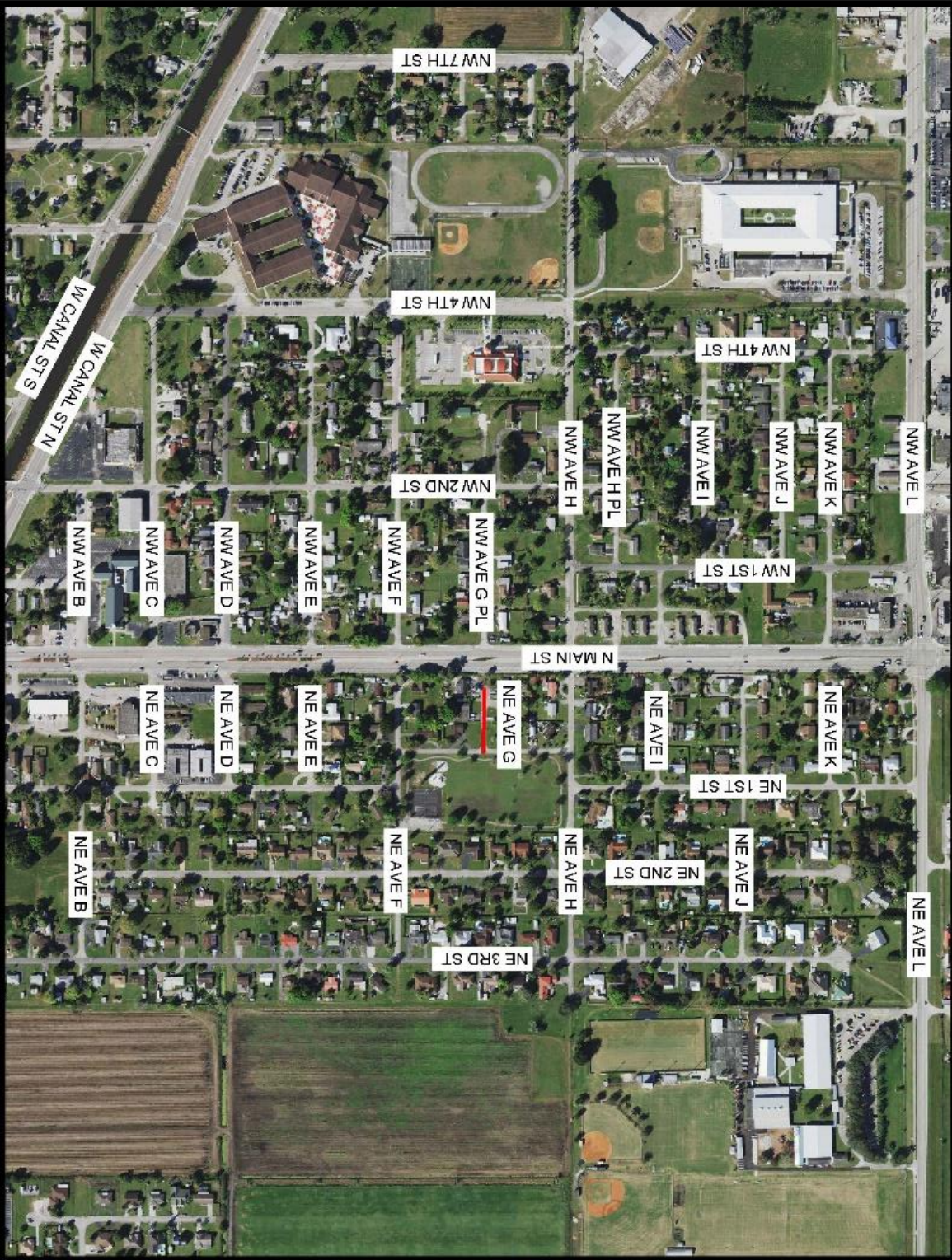


ADDITIONAL INFORMATION:  
PROJECT TITLE: RESURFACING  
CITY OF BELLE GLADE ROADWAYS  
(VARIOUS LOCATIONS)  
BID ITEM NO. 14  
FDOT PROJECT NO. 446249-1-54-01

**NOTE:** RESURFACING LIMITS TO START AT NE 1ST ST AND STOP AT DEAD END. EXTEND RESURFACING THRU ALL INTERSECTIONS. **ALL** TRAVEL LANES AND ALL POINTS OF ROADWAY CURVATURES IN ALL DIRECTIONS. STOP BARS AND DOUBLE YELLOW PAVEMENT MARKINGS TO BE INSTALLED AT ALL INTERSECTIONS, EACH WAY.



# RESURFACING CITY OF BELLE GLADE ROADWAYS



— Proposed Resurfacing Limits

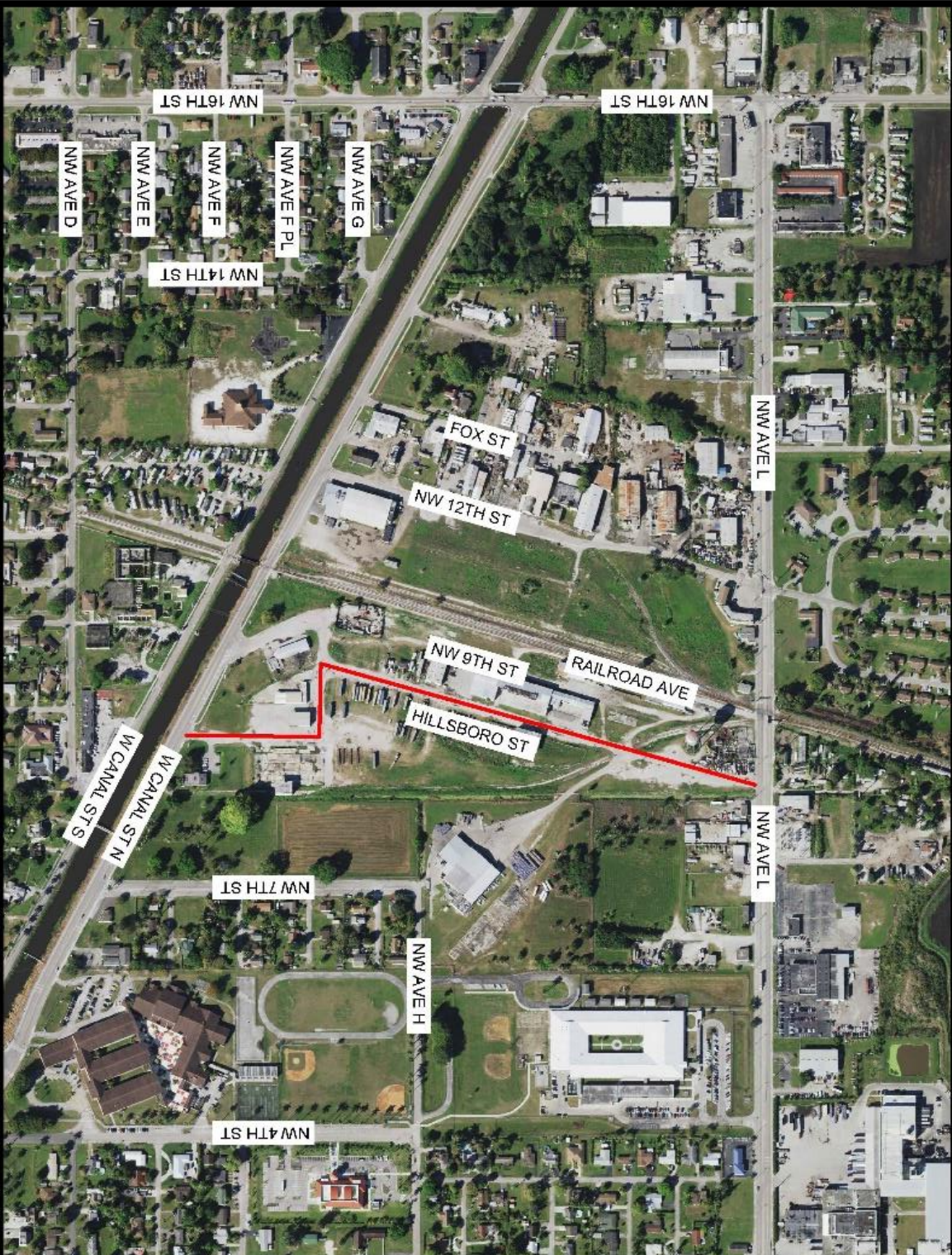


ADDITIONAL INFORMATION:  
PROJECT TITLE: RESURFACING  
CITY OF BELLE GLADE ROADWAYS  
(VARIOUS LOCATIONS)  
BID ITEM NO. 15  
FDOT PROJECT NO. 446249-1-24-01

**NOTE:** RESURFACING LIMITS TO START AT NE 1ST ST AND STOP AT DEAD END. EXTEND RESURFACING THRU ALL INTERSECTIONS, ALL TRAVEL LANES AND ALL POINTS OF ROADWAY CURVATURES IN ALL DIRECTIONS. STOP BARS AND DOUBLE YELLOW PAVEMENT MARKINGS TO BE INSTALLED AT ALL INTERSECTIONS, EACH WAY.



# RESURFACING CITY OF BELLE GLADE ROADWAYS



— Proposed Resurfacing Limits



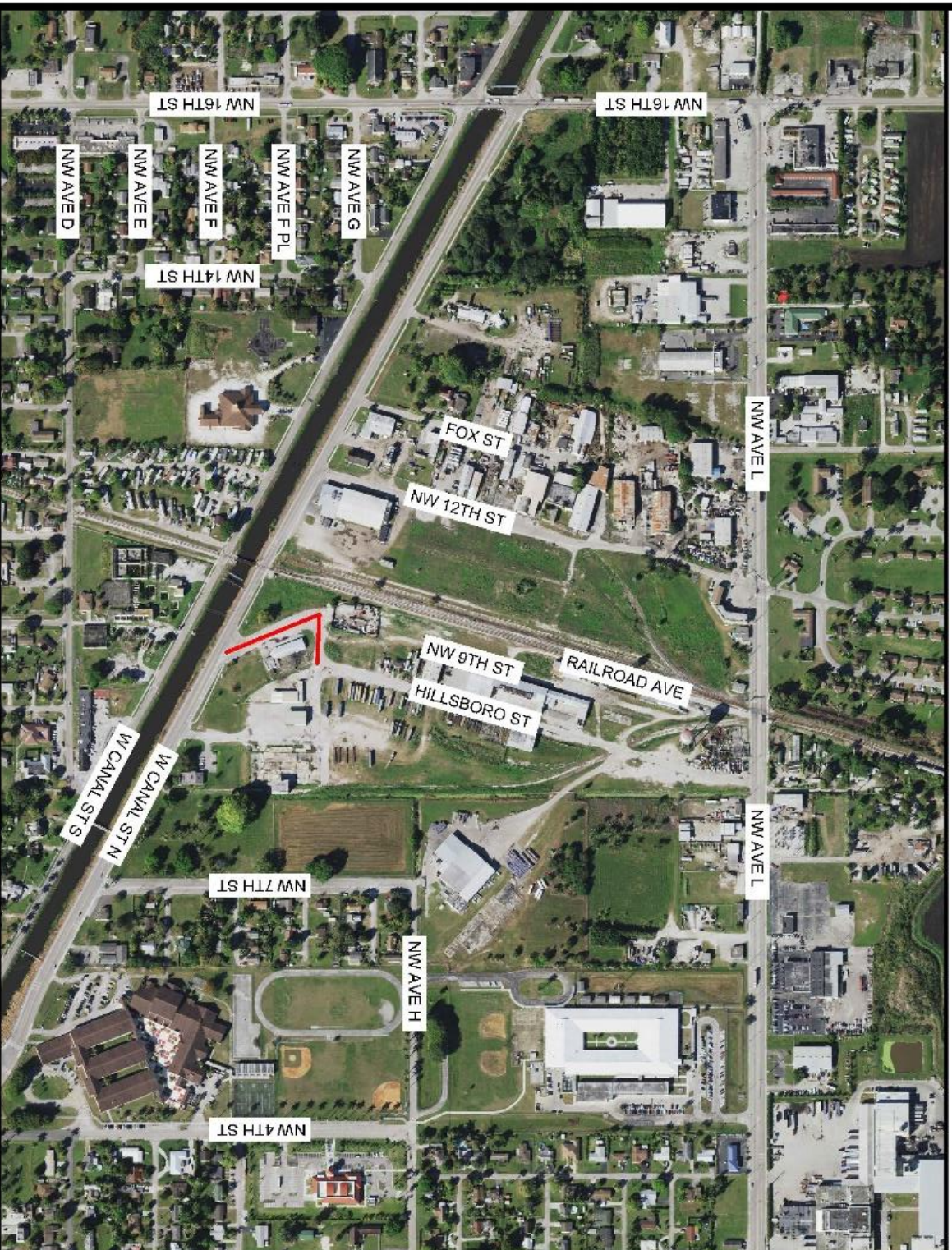
## ADDITIONAL INFORMATION:

PROJECT TITLE: RESURFACING  
CITY OF BELLE GLADE ROADWAYS  
(VARIOUS LOCATIONS)  
BID ITEM NO. 16  
FOOT PROJECT NO. 448249-1-54-01

**NOTE:** RESURFACING LIMITS TO START AT W CANAL ST N THE IN-EDGE OF PAVEMENT ALIGNMENT AND STOP AT NW AVE L THE IN-EDGE OF PAVEMENT ALIGNMENT. EXTEND RESURFACING THRU ALL INTERSECTIONS, ALL TRAVEL LANES AND ALL POINTS OF ROADWAY CURVATURES IN ALL DIRECTIONS (EXCEPT AT W CANAL ST N AND NW AVE L). STOP BARS AND DOUBLE YELLOW PAVEMENT MARKINGS TO BE INSTALLED AT ALL INTERSECTIONS, EACH WAY.



# RESURFACING CITY OF BELLE GLADE ROADWAYS



— Proposed Resurfacing Limits



ADDITIONAL INFORMATION:  
PROJECT TITLE: RESURFACING  
CITY OF BELLE GLADE ROADWAYS  
(VARIOUS LOCATIONS)  
BID ITEM NO. 17  
FDOT PROJECT NO. 446249-1-54-01

**NOTE:** RESURFACING LIMITS TO START AT HILLSBORO ST AND STOP AT W CANAL ST N. TIE-IN/EDGE OF PAVEMENT ALIGNMENT. EXTEND RESURFACING THRU ALL INTERSECTIONS, ALL TRAVEL LANES AND ALL POINTS OF ROADWAY CURVATURES IN ALL DIRECTIONS (EXCEPT AT W CANAL ST N). STOP BARS AND DOUBLE YELLOW PAVEMENT MARKINGS TO BE INSTALLED AT ALL INTERSECTIONS, EACH WAY.